

# BMW F900XR '20-

## M O U N T I N G I N S T R U C T I O N S

REF 20430W

LATERAL DEFLECTOR



1 Person

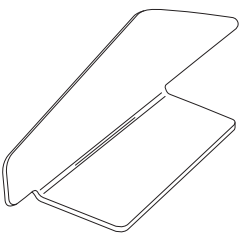
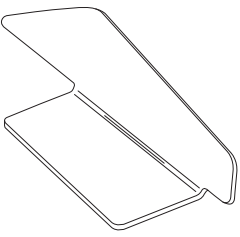
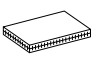


10 min



EASY



ID	PIEZA/PART	DESCRIPCIÓN	DESCRIPTION	QTY	REF
1		Deflector derecho	Right deflector	1	20430W
2		Deflector izquierdo	Left deflector	1	20430W
3		Velcro Dual Lock 25X130 (se suministran montados)	25X130 Dual Lock Velcro (supplied assembled)	4	VELCRO-25X130---

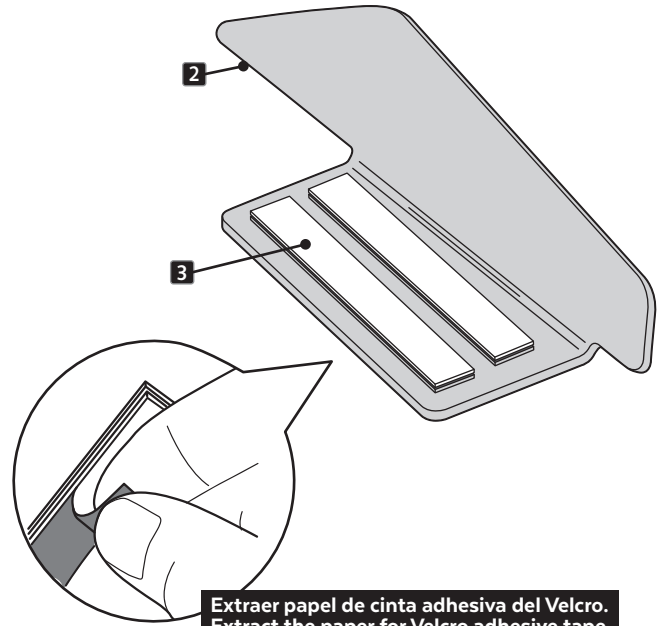
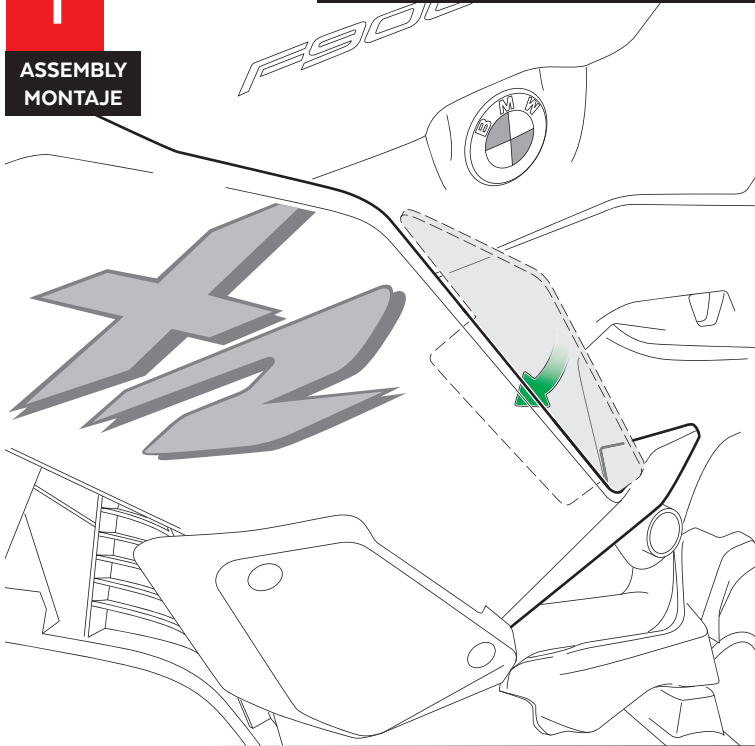
# BMW F900XR '20-

## INSTRUCCIONES DE MONTAJE - MOUNTING INSTRUCTIONS - MONTAGEANLEITUNG

**1**

ASSEMBLY  
MONTAJE

Se muestra el montaje del lado izquierdo a modo de ejemplo, realizar los mismos pasos para el montaje del lado derecho.  
The left side assembly is shown as an example, so the same steps can be performed for the right side assembly.

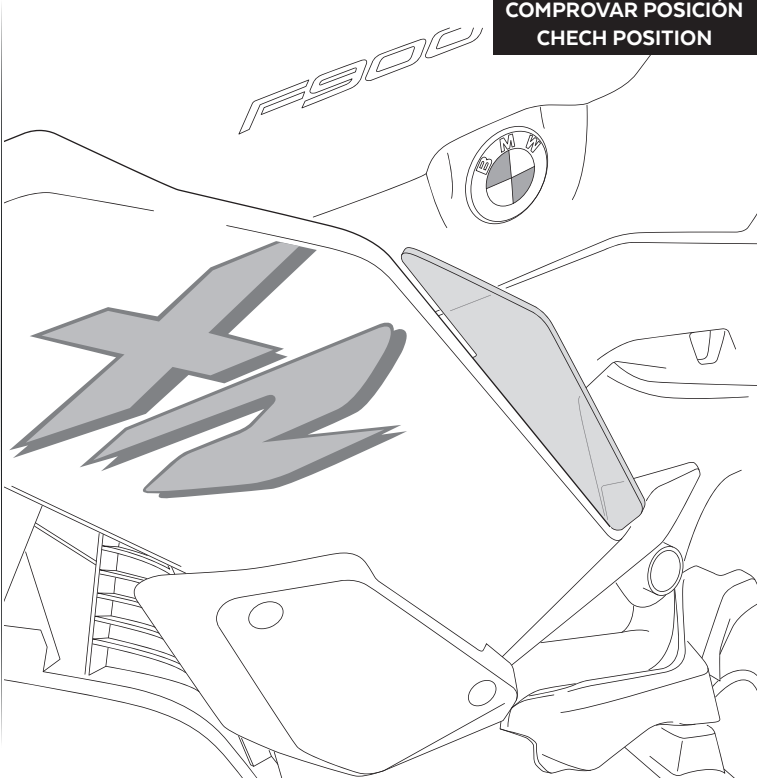
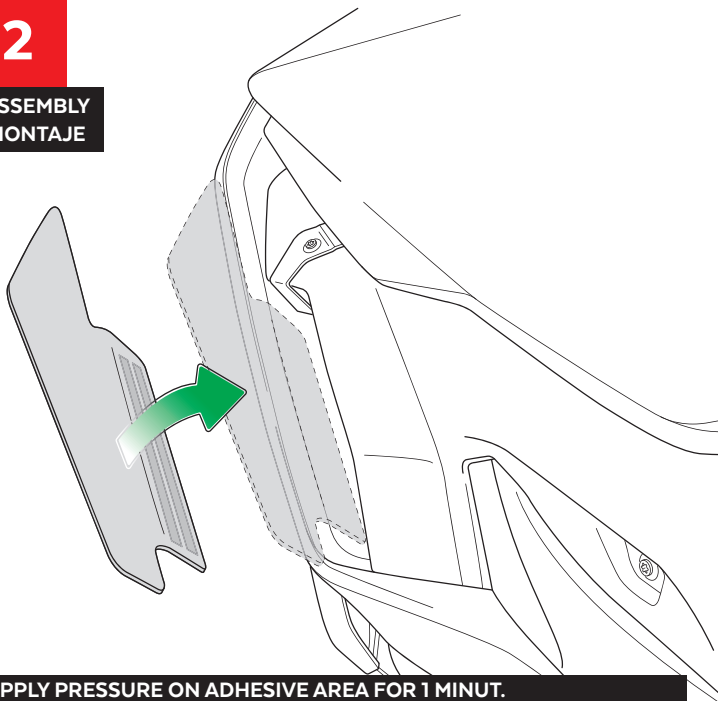


Extraer papel de cinta adhesiva del Velcro.  
Extract the paper for Velcro adhesive tape.

**2**

ASSEMBLY  
MONTAJE

COMPROVAR POSICIÓN  
CHECK POSITION



APPLY PRESSURE ON ADHESIVE AREA FOR 1 MINUT.  
IDEAL TAPE APPLICATION IS ACCOMPLISHED WHEN TEMPERATURE IS BETWEEN 21 °C and 38 °C AND THE BOND IS ALLOWED TO DWELL 24 HOURS.