



Thank you for purchasing the Koso LED Daytime Running Light & Front Position light. Before operating the unit, please read the instruction thoroughly and retain it for the future reference.

⚠ Notice

1. **DC 12V** applications only.
2. For installation, please follow the steps described in manual. Any damage caused by wrong installation shall be imputed to the users.
3. To avoid a short circuit for occurring, do not pull or modify the wires out of the terminals when installing.
4. Disassembling this unit will void your warranty. Maintenance and repairs should be executed by our professionals only.

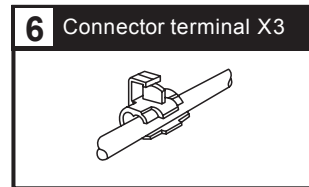
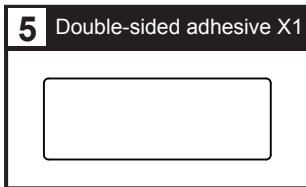
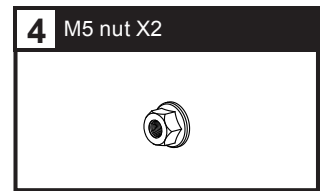
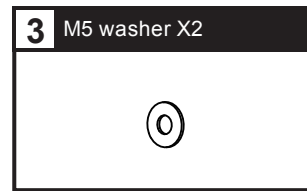
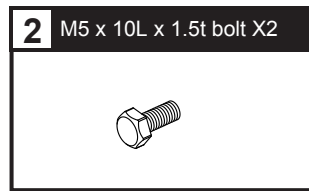
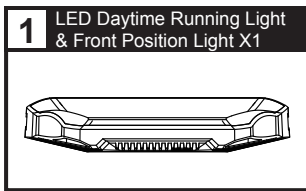
SYMBOL MEANING:

⚠ Some processes must be followed in order to avoid faulty installation.

⚠ **WARNING!** Some procedures must be followed to avoid damages from occurring to yourself and others

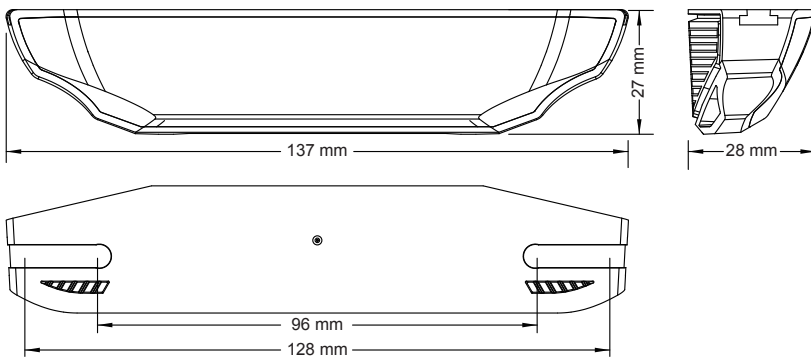
⚠ **CAUTION!** Some procedures must be followed to avoid the damages from occurring to the vehicle.

1 Accessories



NOTE Contact your local distributor if the items received are not the same as the items listed above.

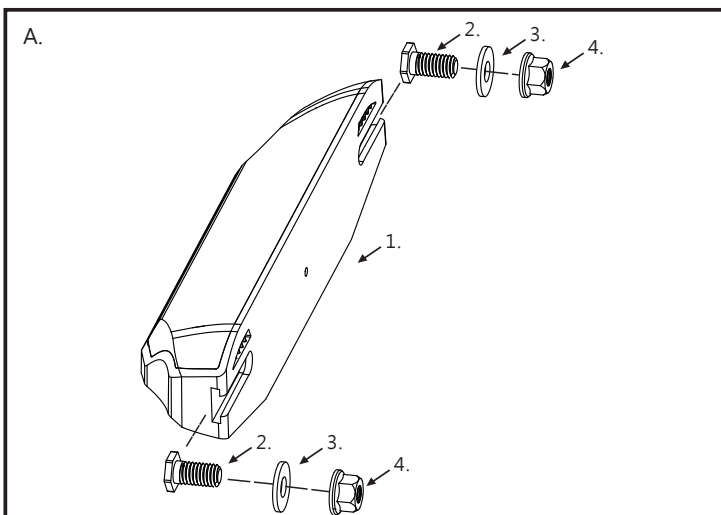
2 Specifications



● Effective temperature range	-10 ~ 60 °C
● Standard	JIS D 0203
● Effective voltage	DC 12 V
● Size	137 x 27 x 28 mm
● Weight	Around 74 g

NOTE Design and specifications are subject to change without notice.

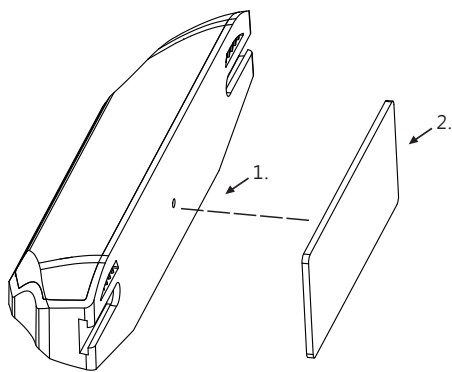
3 Installation instructions



Follow the steps below during installation.

1. LED Daytime Running Light & Front Position Light (Accessory 1)
2. M5 x 10L x 1.5t screw (Accessory 2)
3. M5 washer (Accessory 3)
4. M5 nut X2 (Accessory 4)

B.



Follow the steps below during installation.

1. LED Daytime Running Light & Front Position Light (Accessory 1)
2. Double-sided adhesive (Accessory 5)

Mounting height at least 350 mm above the road surface.

4 Wiring installation instructions

A. If low beam is switched manually

LED Daytime Running Light & Front Position Light (Accessory 1)

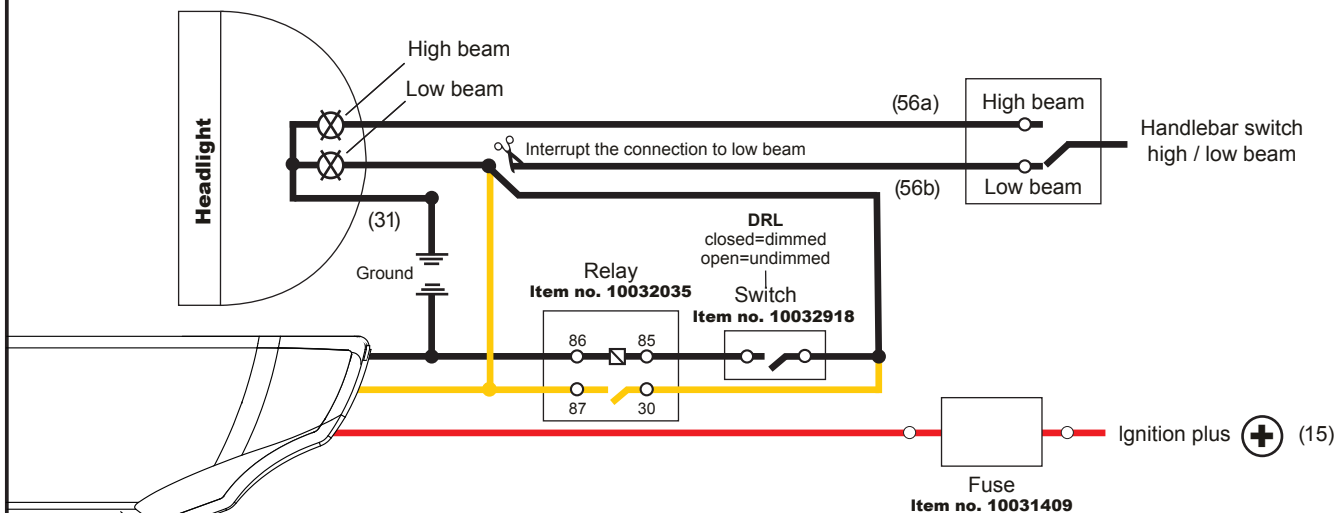
Black / Ground wire. Connect to the vehicle body or the engine (Must be a good ground)

Red / Positive pole (Connect to the Key-On)

Yellow/ Connect to the low beam switch

Parking light

B. IF you low beam is switched automatically via ignition lock



5 Trouble shooting

The following situations do not necessarily indicate malfunction of the unit. Please check the following before taking it in for repair.

Trouble	Check item
No LED's are lighting up.	<ul style="list-style-type: none"> ● Power supply cable may be disconnected. <ul style="list-style-type: none"> → Check if power supply cable is broken or disconnected. → Check if positive and negative poles are properly connected.

※ If the problem persists after reviewing the options above, please contact your local distributor for assistance.