



Fitting Instruction

Part-No. : 118H093
Product : Rear Set
Vehicle Manufacturer : Honda
Model : VTR 1000 SP1 & SP2 2000 →

Important:

Read this instruction manual carefully and mind all warnings and tips. You should do this work only if you're qualified; otherwise we recommend this mounting to be done by a qualified workshop. Improperly mounting of this kit can reduce the driveability of the motorcycle and may be a risk to your health and life.

Special works are marked with the following signs. Please take special care on these works.



Warning! Important mounting instruction. It shows risks to your life and health.



Tips for mounting and maintenance or to avoid damage.

Fitting:

Remove stock rear sets. The following parts will be used for your new rear set: Bolts to fix the hangers



Rear sets are pre-assembled but all screws are not tightened! Always use locknuts or proper amount of medium thread-locking adhesive (e. g. Loctite 243). All details of assembling are shown on the backside drawing. All parts are welded into their bags as they belong together.



The original brake light switch has to be replaced by a hydraulic one. It replaces the brake hose's banjo bolt at the brake cylinder. **This is the highest point in the brake-system, proof proper, air free installation! Use only seal rings according to the brake hose manufactures' instructions.**

The tightening torques for connections to the frame refers to the manufacturer's instructions. Use the following torques for all the other screw connections:

M5	=	6Nm	=	4.43lbf ft
M6	=	10Nm	=	7.38lbf ft
M8	=	20Nm	=	14.75lbf ft
M10x1,25	=	30Nm	=	22.13lbf ft



After installing rear set **test brake and gear shifting indoor. If anything is not operating properly or braking efficiency is poor, testing on the road may result in death or serious injury!**

Maintenance:



Periodically proof all functions during service intervals. Use **particle free (no MoS₂)** lithium or barium soap grease to maintain lever bushings.

Mount hydraulic brake light switch on master brake cylinder

Original counter nut M8

Mount ball joint instead of the original fork head on the push rod. To reach a deep lever position it may be necessary to shorten the push rod

Screw in M8x30 from lever outside and mount bushing (t=4mm) and ball joint on the inside with flat locknut M8

Mount brake pedal as shown in separate drawing for peg adapter

Fit the spring bolt (l=24,5 mm)

New retain spring

Fit the spring bolt (l= 16mm)

Mount exhaust bracket with M6x25 and spacers (t=8mm). Depending on the position of the exhaust the bracket may also face upward.

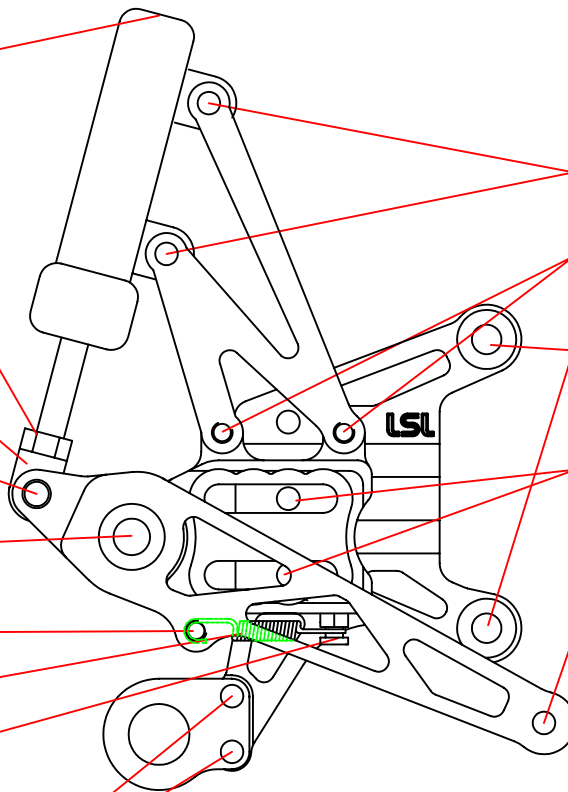
Screw in M6x20 from outside and mount brake cylinder on the inside

Brake cylinder adapter mounted with M6x16 on the outside

Mount hanger with original screws

2x screws M8x25

Fix brake lever knob with countersunk M6x16



Mount hanger with original screws

Fix the ball joint with M6x30 and spacer (t=10mm) on the outside of gearbox lever

Left hand thread ball joint M6 with counter nut

Use the attached spacers 2 x 20mm and 1 x 10mm for your individual position

Fix new gearbox lever with M6x22 and washer

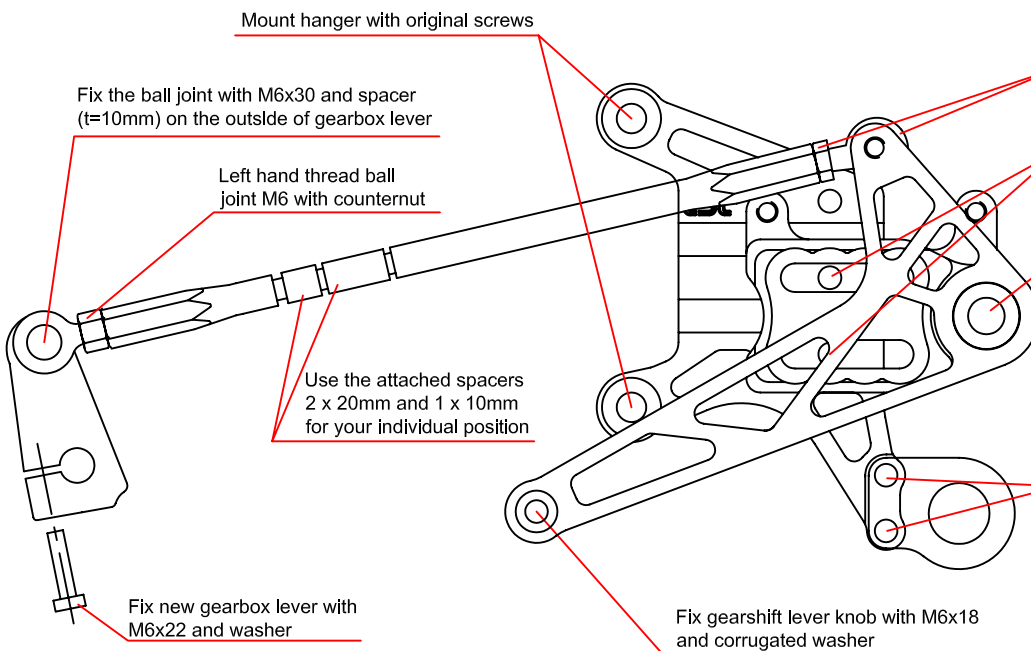
Fix the ball joint with M6x16 on the inside of gearshift lever

2x screws M8x25

Mount gearshift lever as shown in separate drawing for peg adapter

Mount exhaust bracket with M6x16 . Depending on the position of the exhaust the bracket may also face upward.

Fix gearshift lever knob with M6x18 and corrugated washer

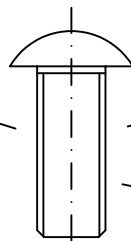


ULS M10x1.25x25

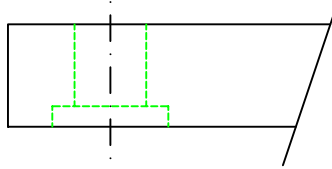
Schrauben-
sicherung
mittelfest
z.B.: Loctite 243

prod. blocage
de sécurité
p.ex. Loctite 243

medium thread
locking adhesive
e.g. Loctite 243



Grundplatte

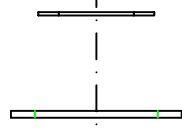


Plaque de fixation
Hanger

ggf. Paßscheibe verwenden
falls Hebel nicht beweglich

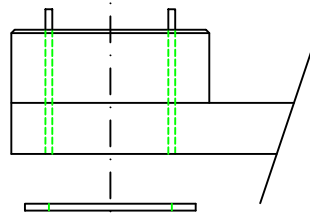
Utilisez rondelle de calage si
le levier n'est pas mobile
If lever is blocked use
shim ring

Scheibe $\varnothing 28\text{mm}$



Rondelle / Washer $\varnothing 28\text{mm}$

Brems- / Schalthebel



Sélecteur/pédale frein
Brake pedal/ Shifter

Scheibe $\varnothing 25\text{mm}$

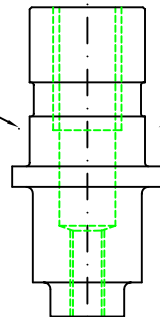
Rondelle / Washer $\varnothing 25\text{mm}$

Fett

Graisse / Grease

starre Lagerung

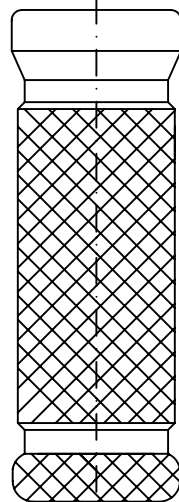
Axe de fixation
Journal



Fußraste

Footpeg

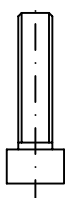
Support de pieds



Schrauben-
sicherung
mittelfest
z.B.: Loctite 243

prod. blocage
de sécurité
p.ex. Loctite 243

medium thread
locking adhesive
e.g. Loctite 243



M5x25