



# Fitting Instruction

Part-No. : 118KT07  
Product : Rear Set  
Vehicle Manufacturer : KTM  
Model : 990 Super Duke

## Important:

Read this instruction manual carefully and mind all warnings and tips. You should do this work only if you're qualified; otherwise we recommend this mounting to be done by a qualified workshop. Improperly mounting of this kit can reduce the driveability of the motorcycle and may be a risk to your health and life.

Special works are marked with the following signs. Please take special care on these works.



**Warning! Important mounting instruction. It shows risks to your life and health.**



**Tips for mounting and maintenance or to avoid damage.**

## Fitting:

Remove stock rear sets. The following parts will be used for your new rear set: Gearbox lever.



**Rear sets are pre-assembled but all screws are not tightened!** Always use locknuts or proper amount of medium thread-locking adhesive (e. g. Loctite 243). All details of assembling are shown on the backside drawing. All parts are welded into their bags as they belong together.



**You need the original KTM Power Parts gearbox lever for reversed shifting.**

The tightening torques for connections to the frame refers to the manufacturer's instructions. Use the following torques for all the other bolted connections:

M5	=	6Nm	=	4.43lbf ft
M6	=	10Nm	=	7.38lbf ft
M8	=	20Nm	=	14.75lbf ft
M10x1,25	=	30Nm	=	22.13lbf ft



**Test brake and gear shifting indoor, after installing rear set. If anything is not operating properly or braking efficiency is poor, testing on the road may result in death or serious injury!**

## Maintenance:



Periodically proof all functions during service intervals. Use **particle free (no MoS<sub>2</sub>)** lithium or barium soap grease to maintain lever bushings.

Fix reservoir and spacer (t=4mm) on the bracket's inside with M6x18. Mount washer and locknut M6 from behind.

Mount brake cylinder on the adaptor's inside with M6x30. Place spacer (t=4mm) between brake cylinder and reservoir bracket.

Fix brake cylinder on the adaptor's inside with M6x25. Mount washer and locknut M6 from behind.

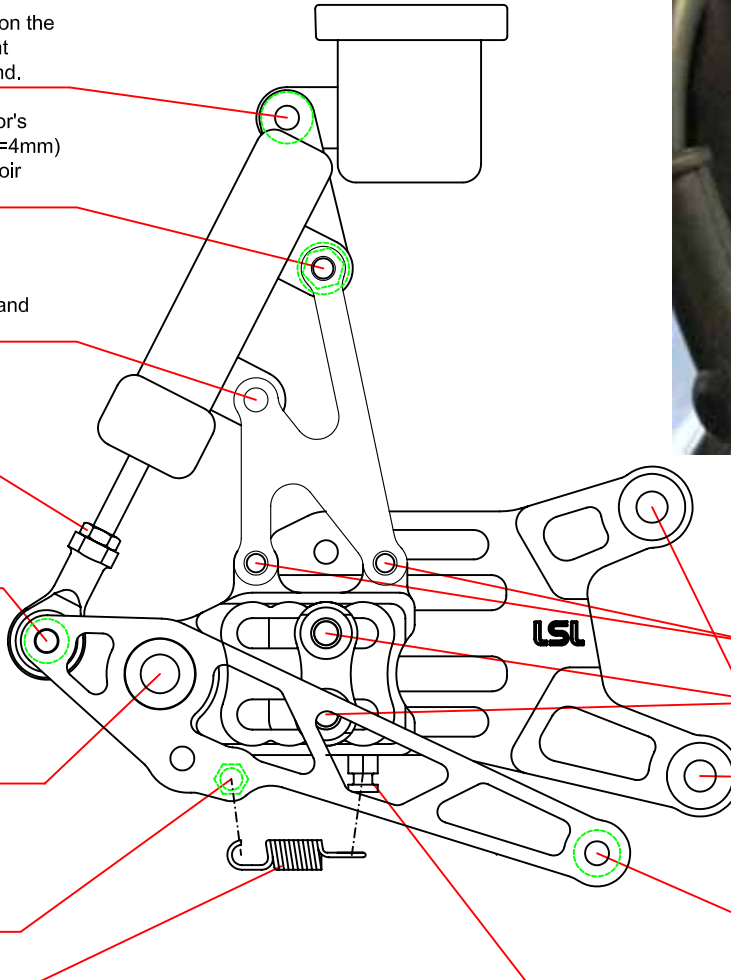
Original counter nut M6

Screw in M6x35 from pedal's outside and mount bushing (t=10mm) and ball joint on the inside with locknut M6

Mount brake pedal as shown in separate drawing for peg adapter

Fit the spring bolt (l=24,5 mm)

New retain spring



Brake cylinder adapter mounted on the outside with M6x16

2x bolts M8x25

Mount hanger with M8x20 and washer

Fix corrugated brake pedal knob with countersunk M6x16

Fit the spring bolt (l= 16mm)

Mount hanger with M8x25, washer and spacers (t=5mm)

Fix ball joint with M6x20 on the gearbox lever. Use washer as spacer between lever and ball joint.

Mount the heel protector on the outside with M6x8

2x bolts M8x25

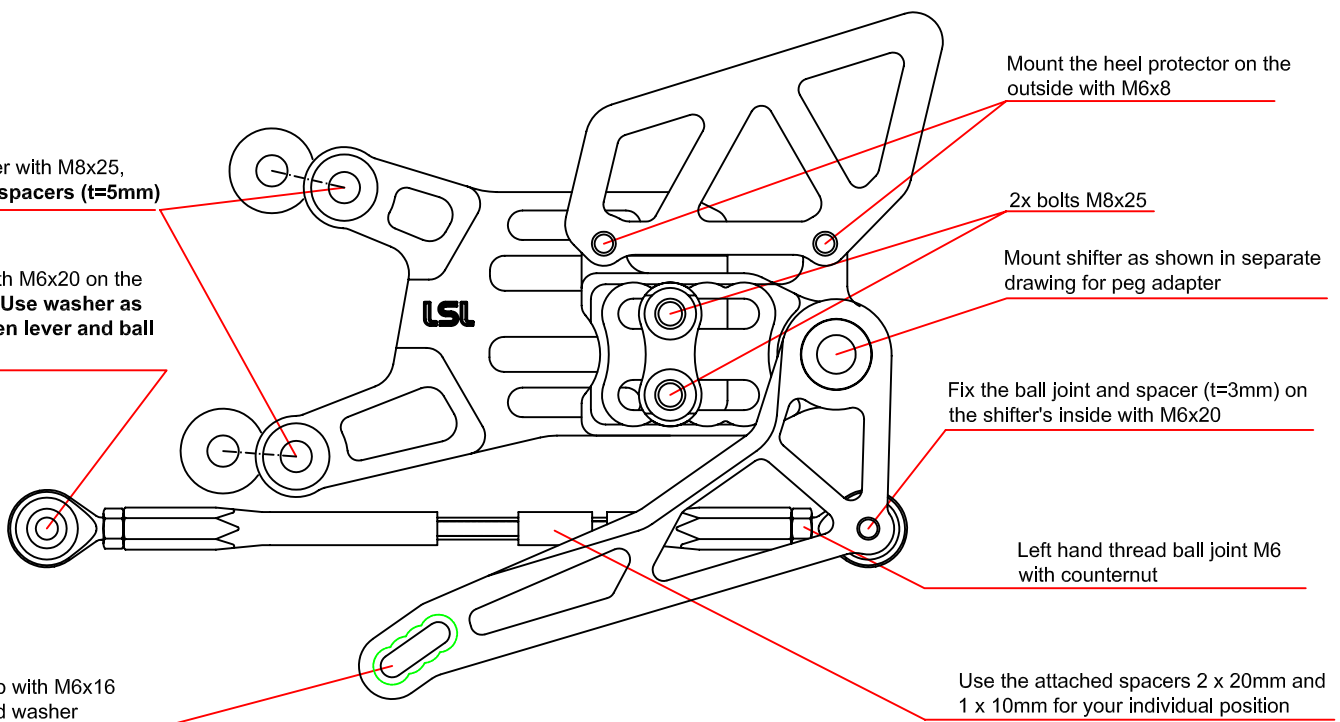
Mount shifter as shown in separate drawing for peg adapter

Fix the ball joint and spacer (t=3mm) on the shifter's inside with M6x20

Left hand thread ball joint M6 with counter nut

Fix shifter knob with M6x16 and corrugated washer

Use the attached spacers 2 x 20mm and 1 x 10mm for your individual position

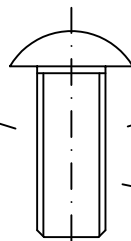


ULS M10x1.25x25

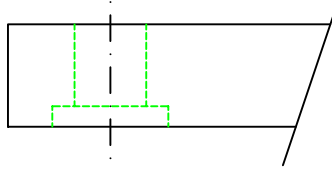
Schrauben-  
sicherung  
mittelfest  
z.B.: Loctite 243

prod. blocage  
de sécurité  
p.ex. Loctite 243

medium thread  
locking adhesive  
e.g. Loctite 243



Grundplatte

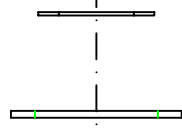


Plaque de fixation  
Hanger

ggf. Paßscheibe verwenden  
falls Hebel nicht beweglich

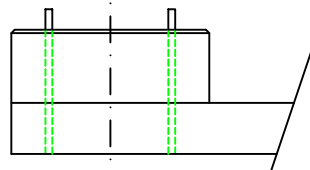
Utilisez rondelle de calage si  
le levier n'est pas mobile  
If lever is blocked use  
shim ring

Scheibe  $\varnothing 28\text{mm}$



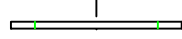
Rondelle / Washer  $\varnothing 28\text{mm}$

Brems- / Schalthebel



Sélecteur/pédale frein  
Brake pedal/ Shifter

Scheibe  $\varnothing 25\text{mm}$



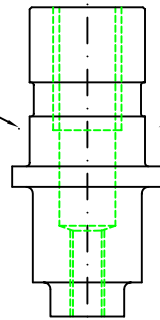
Rondelle / Washer  $\varnothing 25\text{mm}$

Fett

Graisse / Grease

starre Lagerung

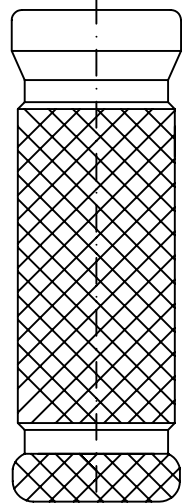
Axe de fixation  
Journal



Fußraste

Footpeg

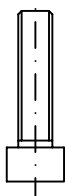
Support de pieds



Schrauben-  
sicherung  
mittelfest  
z.B.: Loctite 243

prod. blocage  
de sécurité  
p.ex. Loctite 243

medium thread  
locking adhesive  
e.g. Loctite 243



M5x25