



Fitting Instruction

Part-No. : **110S119**
Product : **Rear Set**
Vehicle Manufacturer : **Suzuki**
Model (Type) : **GSX 1300BK „B-King“ (WVCR) 2008→**

Important:

Read this instructions carefully and mind all warnings and tips. You should do this work only if you're qualified; otherwise we recommend this mounting to be done by a qualified workshop. Improperly mounting of this kit can reduce the driveability of the motorcycle and may be a risk to your health and life.

Special works are marked with the following signs. Please take special care on these works.



Warning! Important mounting instruction. It shows risks to your life and health.



Tips for mounting and maintenance or to avoid damage.

Fitting:

Remove stock rear sets. The following original parts will be used for your new rear set: gear-box lever and brake-light switch with spring.



Rear sets are pre-assembled but all screws are not tightened! Always use locknuts or proper amount of medium thread-locking adhesive (e. g. Loctite 243). All details of assembling are shown on the backside drawing. All parts are welded into their bags as they belong together.



The cable to the brake-light switch is long enough, but needs to follow up the switch, therefore seat and side cover have to be removed to gain access to the cable.

The tightening torques for connections to the frame refers to the manufacturer's instructions. Use the following torques for all other bolted connections:

M5	=	6Nm	=	4.43lbf ft
M6	=	10Nm	=	7.38lbf ft
M8	=	20Nm	=	14.75lbf ft
M10x1.25	=	30Nm	=	22.13lbf ft

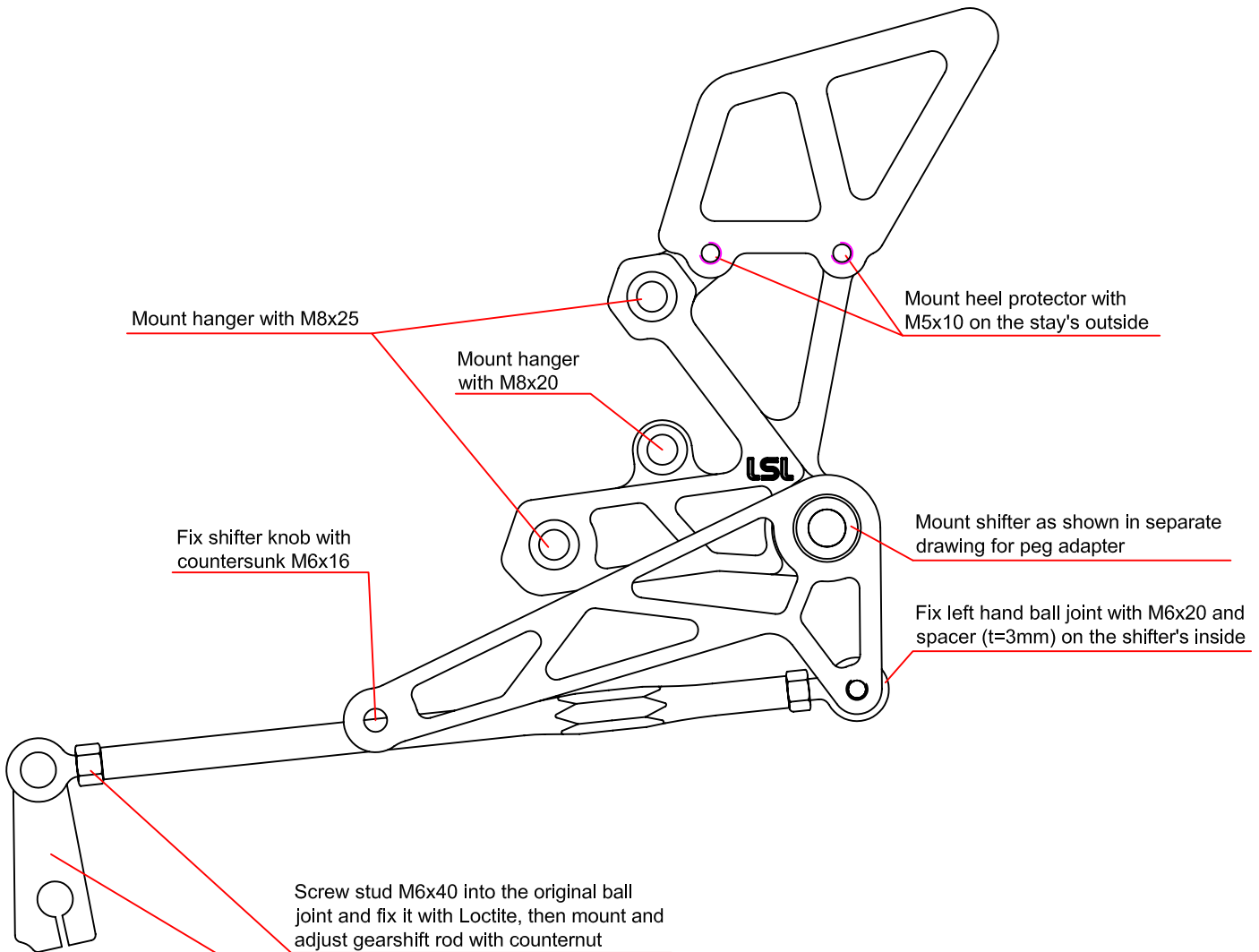
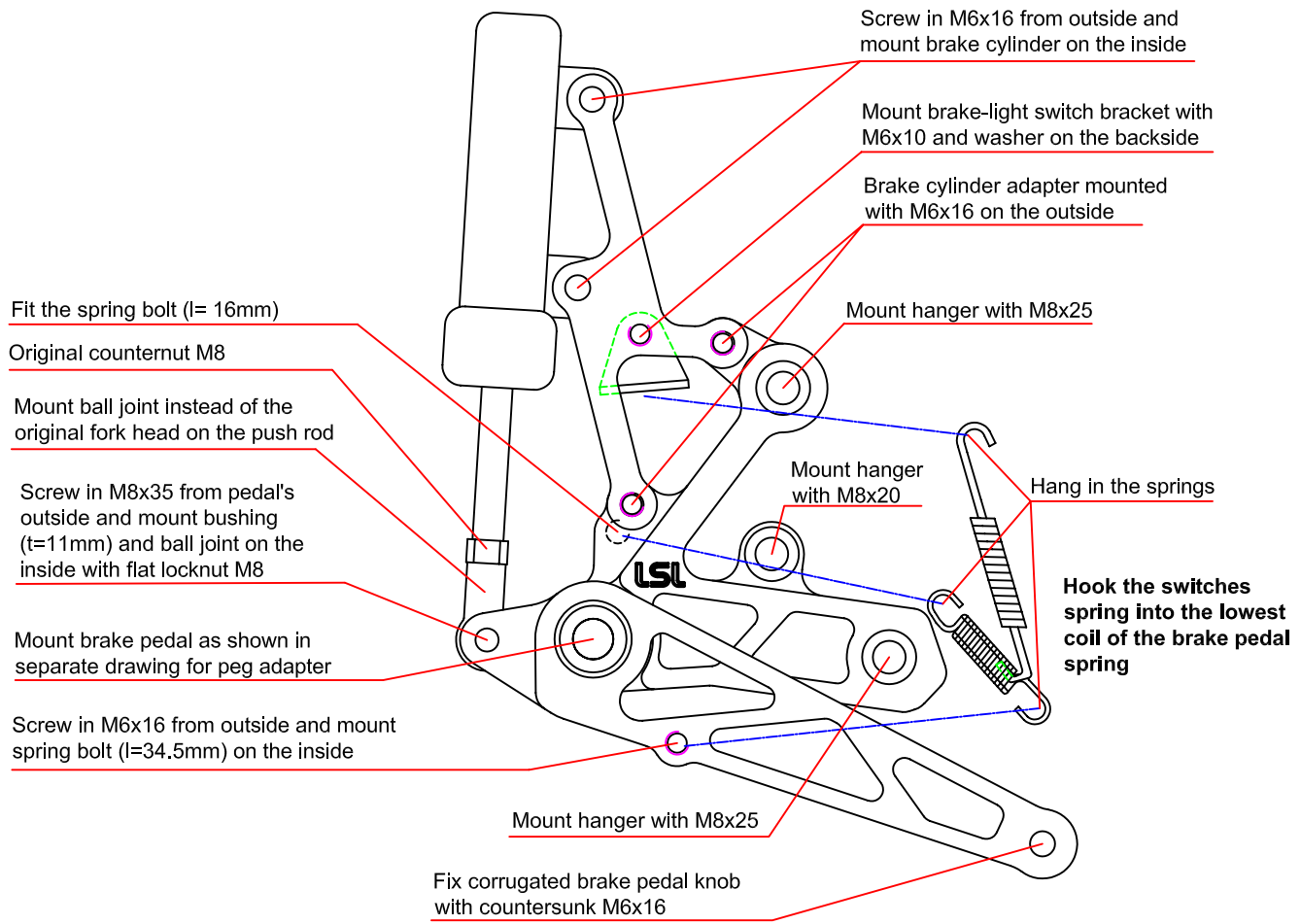


After installing your new rear set, **test brake and gear shifting indoor. If anything is not operating properly or braking efficiency is poor, testing on the road may result in death or serious injury!**

Maintenance:



Periodically proof all functions during service intervals. Use **particle free (no MoS₂)** lithium or barium soap grease to maintain lever bushings.



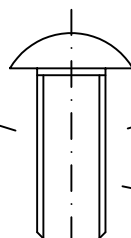
Advice: Turn gear-box lever upside down for reversed shifting!

ULS M10x1.25x25

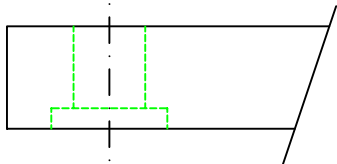
Schrauben-
sicherung
mittelfest
z.B.: Loctite 243

prod. blocage
de sécurité
p.ex. Loctite 243

medium thread
locking adhesive
e.g. Loctite 243



Grundplatte

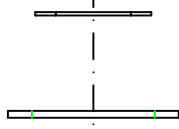


Plaque de fixation
Hanger

ggf. Paßscheibe verwenden
falls Hebel nicht beweglich

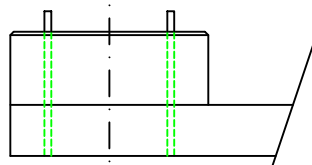
Utilisez rondelle de calage si
le levier n'est pas mobile
If lever is blocked use
shim ring

Scheibe $\varnothing 28\text{mm}$



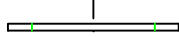
Rondelle / Washer $\varnothing 28\text{mm}$

Brems- / Schalthebel



Sélecteur/pédale frein
Brake pedal/ Shifter

Scheibe $\varnothing 25\text{mm}$



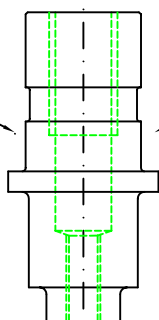
Rondelle / Washer $\varnothing 25\text{mm}$

Fett

Graisse / Grease

starre Lagerung

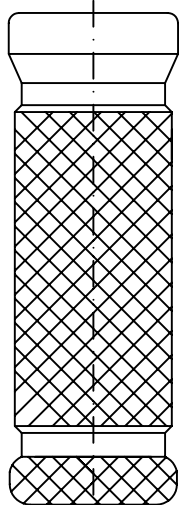
Axe de fixation
Journal



Fußraste

Footpeg

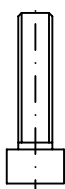
Support de pieds



Schrauben-
sicherung
mittelfest
z.B.: Loctite 243

prod. blocage
de sécurité
p.ex. Loctite 243

medium thread
locking adhesive
e.g. Loctite 243



M5x25