



SCHUBERTH SC1M

CONTENTS

Safety Precautions	4	7 STEREO MUSIC	17
1 INTRODUCTION	7	7.1 Bluetooth Stereo Music	17
2 PACKAGE CONTENTS.....	8	7.2 Music Sharing	17
2.1 SC1M.....	8	8 INTERCOM	18
2.2 RC3.....	8	8.1 Two-way Intercom	18
3 INSTALLING THE SC1M ON YOUR HELMET.....	9	8.2 Multi-way Intercom.....	19
3.1 Installing the SC1M	9	9 THREE-WAY CONFERENCE PHONE CALL WITH INTERCOM PARTICIPANT	20
3.2 Installing the RC3.....	9	10 GROUP INTERCOM	21
4 GETTING STARTED.....	10	11 UNIVERSAL INTERCOM.....	21
4.1 Button Operation	10	12 FM RADIO	22
4.2 Powering On and Off.....	11	12.1 FM Radio On/Off.....	22
4.3 Charging	11	12.2 Preset Stations.....	22
4.4 Remote Control Pairing.....	12	12.3 Seek and Save.....	22
4.5 Checking the Battery Level	12	12.4 Scan and Save	23
4.6 Volume Adjustment.....	12	12.5 Temporary Preset	23
4.7 Softwares	12	12.6 FM Sharing.....	23
5 PAIRING THE SC1M WITH BLUETOOTH DEVICES	13	12.7 Region Selection	24
5.1 Mobile Phone Pairing - Mobile Phone, Bluetooth Stereo Device	13	13 FUNCTION PRIORITY.....	24
5.2 Second Mobile Phone Pairing - Second Mobile Phone, GPS, and SR10.....	13	14 CONFIGURATION SETTING	25
5.3 Advanced Selective Pairing - A2DP Stereo or Handsfree	14	14.1 Headset Configuration Setting.....	25
5.4 Intercom Pairing.....	15	14.2 Software Configuration Setting	26
6 MOBILE PHONE, GPS, SR10	16	15 FIRMWARE UPGRADE	29
6.1 Mobile Phone Call Making and Answering	16	16 TROUBLESHOOTING	30
6.2 Speed Dialing.....	16	16.1 Fault Reset	30
6.3 GPS Navigation.....	17	16.2 Factory Reset.....	30
6.4 Sena SR10, Two-Way Radio Adapter.....	17		

CERTIFICATION AND SAFETY APPROVALS..... 30

- FCC Compliance Statement 30
- FCC RF Exposure Statement 31
- FCC Caution..... 31
- CE Declaration of Conformity..... 31
- Industry Canada Statement..... 32
- Bluetooth License 32
- WEEE (Waste Electrical and Electronic Equipment)..... 33

PRODUCT WARRANTY AND DISCLAIMER..... 33


- Limited Warranty..... 33
- Warranty Exclusions 35
- Warranty Service 37


Safety Precautions

Please ensure that the product is properly used by observing the safety precautions below to prevent any risk of serious injury, death and/or damage to property.

Hazard alert signal words

The following safety symbols and signal words are used in this manual.

 **WARNING** Indicates a potential hazardous situations that, if not avoided, could result in death or serious injury.

 **CAUTION** Indicates a potential hazardous situation that, if not avoided, could result in minor or moderate injury.

NOTICE Indicates information considered important, but not hazard-related. If not avoided, it could cause damage to your product.

Note Notes, usage tips, or additional information

Product Use

Observe the following precautions to avoid injury or damage to your product while using the product.

 **WARNING**

- Use of the product at a high volume for a long period of time may damage your eardrums or hearing ability.

- When relevant, follow all regulations regarding the use of the camera.
 - (1) Do not use your camera in an aircraft, unless permitted.
 - (2) Turn off the camera when you are near medical equipment. Your camera can cause interference with medical devices in hospital or healthcare facilities.
- The camera generates a low level magnetic field. Keep a safe distance between the camera and cardiac pacemakers to avoid potential interference. Turn off the camera immediately if your camera indicates interference with a pacemaker and contact the pacemaker manufacturer or a physician.
- Avoid interference with other electronic devices. Your camera generates a low level magnetic field that may interfere with unsealed or improperly shielded electronic equipment in homes or vehicles. Consult the manufacturers of your electronic devices to resolve any interference problems you experience.
- Never use a damaged memory card. This may result in electric shock, camera malfunction, or fire.
- Careless use of the product on the road is risky and may result in serious injury, death or damage. You must heed all safety precautions in all documents that come with this product. This will help minimize the chance these risks may occur while riding.
- In any place where wireless communication is prohibited, such as hospitals or airplanes, turn off the power. In a place where wireless communication is prohibited, electromagnetic waves may cause hazards or accidents.
- Before riding, fasten the product from the helmet, and double-check that it is properly fastened. Separation of the product while riding will cause damage to the product and may result in an accident.
- When you use the product while you operating any vehicle or equipment such as motorcycles, scooters, mopeds, ATVs, or quadbikes (hereinafter called “transportation means”), you need to follow the safety precautions provided by the manufacturer of the vehicle.
- When you use the product, use good judgment; never use it under the influence of alcohol or drugs or when you are extremely tired.

 **CAUTION**

- If the product emits an unusual smell, feels hot, or appears abnormal in any other way while using or charging, stop using it immediately. It may cause damage, explosion, or fire. Contact your sales location if any of these problems are observed.
- Do not use the product in an explosive atmosphere. If you are in such a location, turn off the power and heed any regulations, instructions, and signs in the area.

NOTICE

- Attaching the product to the helmet is considered a modification to the helmet and may void your helmet's warranty or compromise your helmet's functionality. This may entail risks during an accident, so be fully aware of this fact before using the product. Should you not accept this fact, you may return the product for a full refund.
- In some regions, it is prohibited by law to ride motorcycles while wearing headsets or earbuds. Therefore be certain you are aware of all relevant laws in the region where you are using the product and are sure that you comply with them.
- The headset is for motorcycle helmets only. To install the headset, you must follow the installation instructions shown in the User's Guide.
- Do not impact the product with sharp tools as this may damage the product.
- Keep product away from pets or small children. They may damage the product.
- Any changes or modifications to the equipment not expressly approved by the party responsible for compliance could void the limited warranty to operate the equipment.
- High internal temperature may result in noisy photos. This is not a malfunction and does not affect your camera's overall performance.
- Check that the camera is operating properly in advance. Any file loss or camera damage caused by camera malfunction or improper use is not covered under warranty.

Battery

Your product has a built-in battery. Be careful to heed all safety information in this guide. Failure to carefully observe the safety precautions can cause battery heat generation, bursting, fire and serious personal injury.

 **WARNING**

- Do not use the product in direct sunlight for a long period of time. Doing so can damage the product and generate heat that can cause burns.
- Do not use or store the product inside cars in hot weather. It may cause the battery to generate heat, rupture, or ignite.
- Do not continue charging the battery if it does not recharge within the specified charging time. Doing so may cause the battery to become hot, explode, or ignite.
- Do not leave the product near open flames. Do not dispose of the product in a fire. It may cause the battery to become hot, explode, or ignite and cause serious injury.
- Never attempt to charge a battery with the charger which has been physically damaged. It may cause explosion and/or accidents.

NOTICE

- Battery life may vary depending on conditions, environmental factors, functions of the product in use, and devices used with it.

Product Storage and Management

Take the following precautions to avoid personal injury or damage to your product while storing and maintaining the product.

CAUTION

- Do not dispose of the product with household waste. The built-in battery is not to be disposed of in municipal waste stream and requires separate collection. Disposal of the product should be done in accordance with the local regulations.

NOTICE

- Keep the product free of dust. Dust may damage mechanical and electronic parts of the product.
- The product should be stored at room temperature. Do not expose the product to extremely high or low temperature as this may reduce the life span of electronic devices, damage the battery, and/or melt plastic parts of the product.
- Do not clean the product with cleaning solvents, toxic chemicals, or strong detergents as this may damage the product.
- Do not paint the product. Paint may obstruct moving parts or interfere with the normal operation of the product.
- Do not drop or otherwise shock the product. It may damage the product or its internal electronic circuits.
- Do not disassemble, repair or modify the product as this may damage the product and invalidate the product warranty.
- Do not store the product in humid environments, especially for long periods of time. It may damage the internal electronic circuits.
- Battery performance will deteriorate over time if stored for a long period of time without being used.

- Do not store the camera in proximity to magnetic fields. Doing so may result in camera malfunction.
- Be careful to protect the lens by avoiding rough handling or physical shock.
- Wipe the surface of the lens with a soft cloth in the following situations:
 - (1) When there are fingerprints on the lens surface.
 - (2) When the lens is used in hot or humid environments, such as near oceans or rivers.
- Store the product in a well-ventilated room to protect the lens from dirt and dust.

1 INTRODUCTION

Thank you for choosing the SCHUBERTH SC1M, Motorcycle Bluetooth Communication System with Remote Control. With the SC1M, you can control the headset using the Remote Control to call handsfree on your Bluetooth mobile phone, listen to stereo music or voice instructions of GPS navigations wirelessly, and have intercom conversations in full duplex with a passenger or other motorcycle riders.

The SC1M is compliant with the Bluetooth 4.1 supporting the following profiles: Headset Profile, Hands-Free Profile (HFP), Advanced Audio Distribution Profile (A2DP), and Audio Video Remote Control Profile (AVRCP). Please check with the manufacturers of other device to determine their compatibility with this headset.

Please read this User's Guide carefully before using the headset. Also check www.schuberth.com for the latest version of the User's Guide and additional information related to SCHUBERTH Bluetooth products.

The SC1M features:

- Bluetooth 4.1
- Invisible beauty with custom design
- Bluetooth intercom up to 500 meters (550 yards)*
- Audio Multitasking
- Audio Source Priority
- Four-way intercom
- Voice prompts
- Smartphone App for iPhone and Android
- Built-in FM radio tuner with a station scan and save function
- Universal Intercom™
- Music sharing
- FM sharing
- Advanced Noise Control™
- Firmware upgradeable

.....
* in open terrain

2 PACKAGE CONTENTS

2.1 SC1M

- *SC1M Main Unit*



- *USB Power & Data Cable*



2.2 RC3

- *RC3 (Remote Control)*



- *Hook and Loop Fasteners for RC3 (2)*



- *Double Sided Adhesive Tapes for RC3 (2)*



- *Clip Mount*



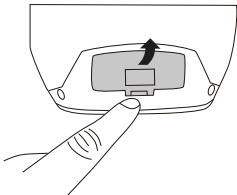
- *Coin Battery*



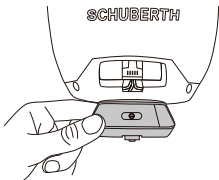
3 INSTALLING THE SC1M ON YOUR HELMET

3.1 Installing the SC1M

1. Remove the cover.



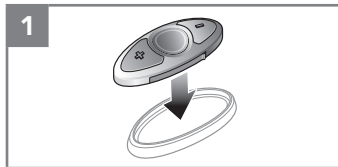
2. Insert the main unit into the helmet and push it gently until you hear a click.



3.2 Installing the RC3

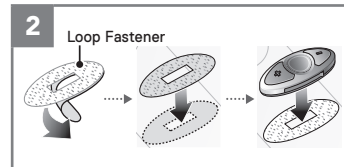
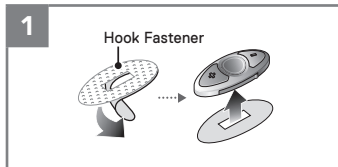
There are three ways of installing the RC3.

- ◆ Using the Clip



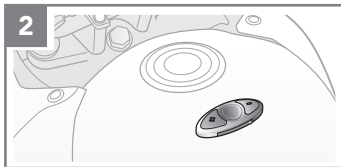
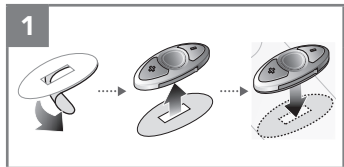
- ◆ Using the Hook and Loop Fasteners

1. Attach the hook fastener to the RC3.
2. Attach the loop fastener to the helmet or the motorcycle body. Attach the RC3 using the hook and loop fasteners that you fitted.



• Using the Adhesive Tape

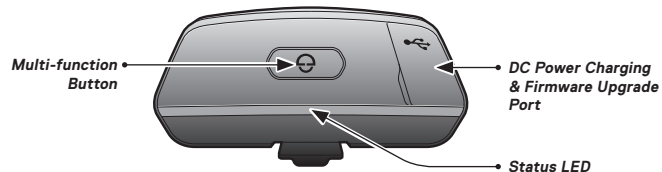
1. Attach double sided adhesive tapes to the back plate of the RC3.
2. Attach double sided adhesive tapes to the helmet or the motorcycle body.
3. Make sure that the main unit sticks on the helmet firmly. Maximum adhesion occurs after 24 hours.



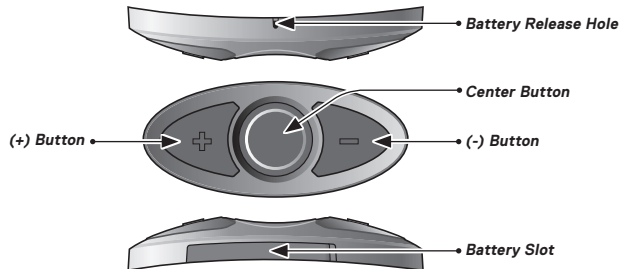
4 GETTING STARTED

4.1 Button Operation

• SC1M



• RC3



4.2 Powering On and Off

4.2.1 SC1M

To power on/off the SC1M, press and hold the Multi-function Button for 1 second.

4.2.2 RC3

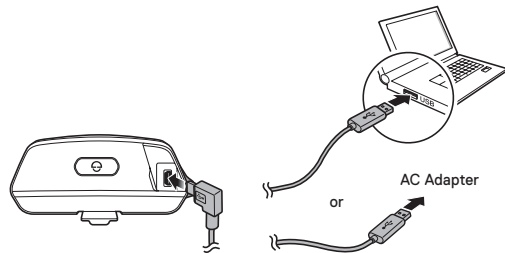


To begin using the RC3, remove the plastic tape from the battery slot. To power on the device, tap the Center Button. To power off the device, press and hold the (+) Button and the Center Button for 1 second.

4.3 Charging

4.3.1 SC1M

You can charge the SC1M by connecting the supplied USB power & data cable into a computer's USB port or USB wall charger. You can use any standard micro USB cable to charge the unit. The LED turns red while charging and turns blue when fully charged. It takes about 2.5 hours to be completely charged.



Note:

Please make sure to take off your SC1M-installed helmet while charging. The headset automatically turns off during charging.

4.3.2 RC3



The RC3 uses a CR2016 Lithium 3V coin battery. If the RC3 is discharged, you can replace the battery with a new one. When closing the battery slot, insert both ends of the rubber first. To remove the battery, insert a paper clip through the Battery Release Hole.

4.4 Remote Control Pairing

The SC1M and the Remote Control come paired together. They will automatically connect to each other when the SC1M and the remote control are powered on.

If you are using a remote control other than the one included in the package, follow the procedure below to pair the SC1M and the Remote Control.

1. On the SC1M, press and hold the Multi-function Button for 5 seconds and you will hear a voice prompt, **“Remote control pairing”**.
2. On your Remote Control, enter Bluetooth pairing mode.
3. The SC1M will automatically perform pairing with the Remote Control in pairing mode. When they are successfully connected, you will hear a voice prompt, **“Remote control connected”**.

4.5 Checking the Battery Level

When the SC1M or the Remote Control is powering on, their red LED flashes rapidly indicating the battery level.

- 4 flashes = High, 70 ~ 100%
- 3 flashes = Medium, 30 ~ 70%
- 2 flashes = Low, 0 ~ 30%

Note:

1. The battery performance may be reduced over time with usage.
2. Battery life may vary depending on conditions, environmental factors, functions of the product in use, and devices used with it.

4.6 Volume Adjustment

You can easily adjust the volume by tapping the (–) Button or the (+) Button. You will hear a beep when the volume reaches the maximum or minimum level. The volume is set and maintained independently at different levels for each audio source even when you reboot the headset.

4.7 Softwares

4.7.1 Device Manager

You can upgrade the headset’s firmware and configure its settings directly from your PC or Apple computer. For more information on downloading the Device Manager, please visit oem.sena.com/schubert/.

4.7.2 Smartphone App

The Smartphone App allows you to configure device settings and read the User’s Guide and the Quick Start Guide. Run the Smartphone App and you can configure its settings directly from your smartphone. You can download the Smartphone App for Android or iPhone from oem.sena.com/schubert/.

5 PAIRING THE SC1M WITH BLUETOOTH DEVICES

Before using the SC1M Bluetooth headset with any other Bluetooth devices for the first time, you will need to pair them together. You can pair the SC1M with Bluetooth mobile phones, Bluetooth stereo devices such as MP3 players, or motorcycle specific Bluetooth GPS navigation, and with other Sena Bluetooth headsets. The pairing operation is required only once for each Bluetooth device. The headset remains paired with the devices and automatically reconnects to them when they are within range.

5.1 Mobile Phone Pairing - Mobile Phone, Bluetooth Stereo Device

1. To enter the configuration menu, press and hold the Center Button for 10 seconds until you hear the voice prompt, **“Configuration menu”**.
2. By tapping the (+) Button, you will hear the voice prompt, **“Phone pairing”**.
3. Search for Bluetooth devices on your mobile phone. Select the SC1M in the list of the devices detected on the mobile phone.
4. If your mobile phone asks for a PIN, enter 0000.

5.2 Second Mobile Phone Pairing - Second Mobile Phone, GPS, and SR10

1. To enter the configuration menu, press and hold the Center Button for 10 seconds until you hear the voice prompt, **“Configuration menu”**.
2. Tap the (+) Button until you hear a voice prompt, **“Second mobile phone pairing”**.
3. Search for Bluetooth devices on your mobile phone. Select the SC1M in the list of the devices detected on the mobile phone.
4. If your mobile phone asks for a PIN, enter 0000.

Note:

- 1. If you have two audio (A2DP) devices connected to your headset then the audio from one device will interrupt the audio from the other device. For example, if you are playing music from the primary mobile phone, then it can be interrupted by playing music from the secondary mobile phone and vice versa.*
- 2. You have to use a motorcycle specific GPS, which transmits turn-by-turn voice instructions to the headset by Bluetooth. Most automotive GPS systems do not have this feature.*
- 3. The Sena SR10 is a Bluetooth two-way radio adapter for group communication, and uses Hands-Free Profile. The incoming audio from the two-way radio via SR10 is heard in the background while having an intercom conversation or a mobile phone call.*
- 4. The GPS navigation or a radar detector could be connected to the SR10 by wire. The GPS voice instruction or the radar detector alarm is also heard in the background via SR10 while having an intercom conversation or a phone call. Please refer to the SR10 User's Guide for details.*

5.3 Advanced Selective Pairing - A2DP Stereo or Handsfree

Phone Pairing allows the headset to establish two Bluetooth profiles: Hands-Free or A2DP Stereo. Advanced Selective Pairing allows the headset to separate the profiles to enable connection with two devices.

5.3.1 A2DP Stereo Music Only

1. To enter the configuration menu, press and hold the Center Button for 10 seconds until you hear the voice prompt, **“Configuration menu”**.
2. Tap the (+) Button until you hear a voice prompt, **“Media selective pairing”**.
3. Search for Bluetooth devices on your mobile phone. Select the SC1M in the list of the devices detected on the mobile phone.
4. If your mobile phone asks for a PIN, enter 0000.

5.3.2 HFP for Phone Call Only

1. To enter the configuration menu, press and hold the Center Button for 10 seconds until you hear the voice prompt, “**Configuration menu**”.
2. Tap the (+) Button until you hear a voice prompt, “**Phone selective pairing**”.
3. Search for Bluetooth devices on your mobile phone. Select the SC1M in the list of the devices detected on the mobile phone.
4. If your mobile phone asks for a PIN, enter 0000.

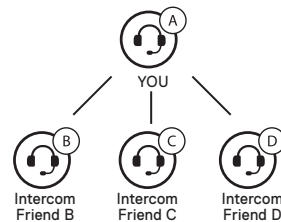
5.4 Intercom Pairing

5.4.1 Pairing with Other SC1M headsets for Intercom Conversation

The SC1M can be paired with up to three other headsets for Bluetooth intercom conversation.

1. Press and hold the Center Button of the **headset A and B** for 5 seconds until red LEDs of the both units start to flash rapidly.
2. Simply tap the Center Button of any one of the two **headsets A and B**, and wait until the LEDs of both headsets turn to blue and intercom connection is automatically established.

3. You can make other pairings between **headsets A and C**, and between **headsets A and D** by following the same procedure as above.
4. The intercom pairing queue is “**Last-Come, First-Served**”. If a headset has multiple paired headsets for intercom conversations, the last paired headset is set as **first intercom friend**. The previous intercom friend becomes **second intercom friend**, and **third intercom friend**.



6 MOBILE PHONE, GPS, SR10

6.1 Mobile Phone Call Making and Answering

1. To answer a call, tap the Center Button to answer the call.
2. You can also answer the incoming call by loudly speaking any word of your choice if VOX Phone is enabled, unless you are connected to intercom.
3. To end a call, press and hold the Center Button for 2 seconds until you hear a mid-tone single beep.
4. To reject a call, press and hold the Center Button for 2 seconds until you hear a beep while the phone is ringing.
5. To make a call with voice dialer, press and hold the Center Button for 3 seconds in stand-by mode to activate the voice dialer of your mobile phone.

6.2 Speed Dialing

1. Press and hold the (+) Button for 3 seconds and you will hear a mid-tone single beep and a voice prompt, **“Speed dial”**.
2. Tap the (+) Button or the (-) Button to navigate between the menus. You will hear prompts for each menu item.
3. Tap the Center Button to select a voice menu among the followings:

(1) Last number redial	(4) Speed dial 3
(2) Speed dial 1	(5) Cancel
(3) Speed dial 2	
4. After selecting the last number redial menu, **“Last number redial”**. Then, to redial the last phone call number, tap the Center Button.
5. To call one of the speed dials, tap the (+) Button or the (-) Button to navigate between the menus until you hear a voice prompt, **“Speed dial (#)”**. Then, tap the Center Button.
6. If you want to exit the speed dial immediately, tap the (+) Button or the (-) Button until you hear a voice prompt, **“Cancel”**, and tap the Center Button.

6.3 GPS Navigation

6.3.1 GPS Pairing

1. To enter the configuration menu, press and hold the Center Button for 10 seconds until you hear the voice prompt, **“Configuration menu”**.
2. Tap the (+) Button until you hear a voice prompt, **“GPS pairing”**.
3. Search for Bluetooth devices on the GPS navigation. Select the SC1M in the list of the devices detected on the GPS.
4. Enter 0000 for the PIN.

Note:

When Audio Multitasking is enabled, if you pair your GPS device via GPS Pairing, its instructions will not interrupt your intercom conversations, but will overlay with them.

6.4 Sena SR10, Two-Way Radio Adapter

You can use a two-way radio and the SC1M Bluetooth intercom simultaneously by using the Sena SR10, a Bluetooth Two-way Radio Adapter (please refer to *section 5.2, “Second Mobile Phone Pairing - Second Mobile Phone, GPS, and SR10”*). Incoming audio from the two-way radio will not interrupt an intercom conversation but is heard in the background. This is useful when you have an intercom conversation with a passenger on the back seat and use a two-way radio for group communication with other motorcycle riders.

7 STEREO MUSIC

7.1 Bluetooth Stereo Music

1. To play or pause music, press and hold the Center Button for 1 second until you hear a double beep.
2. To adjust the volume, tap the (+) Button or the (-) Button.
3. To track forward or track back, press and hold the (+) Button or the (-) Button for 1 second until you hear a beep.

7.2 Music Sharing

You can start sharing music with an intercom friend using Bluetooth stereo music during a two-way intercom conversation. When you terminate music sharing, you can go back to the intercom conversation. To start or terminate sharing music, press and hold the Center Button for 1 second during an intercom conversation until you hear a double beep.

Note:

1. Both you and your intercom friend can remotely control music playback such as track forward and track back.
2. Music sharing will be paused when you are using your mobile phone or listening to GPS instructions.
3. Music sharing will be terminated if the headset starts a multi-way intercom conference.
4. When Audio Multitasking is enabled, if an intercom call is made when you are listening to music, music sharing will not work.

8 INTERCOM

8.1 Two-way Intercom

8.1.1 Starting Two-way Intercom

You can start an intercom conversation with one of any intercom friends by tapping the Center Button: single tap to intercom with the **first intercom friend**, double tap to intercom with the **second intercom friend**, and triple tap to intercom with the **third intercom friend**.

8.1.2 Ending Two-way Intercom

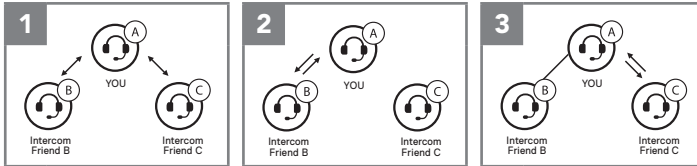
You can end an intercom conversation with one of any intercom friends by tapping the Center Button: single tap to intercom with the **first intercom friend**, double tap to intercom with the **second intercom friend**, and triple tap to intercom with the **third intercom friend**.

8.2 Multi-way Intercom

Multi-way Intercom enables conference-call-style conversations with up to three intercom friends at the same time. While multi-way intercom is in progress, mobile phone connection is temporarily disconnected. However, as soon as multi-way intercom terminates, the mobile phone connection will be reestablished.

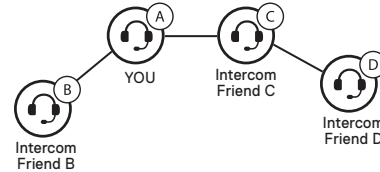
8.2.1 Starting Three-way Intercom

1. You (A) need to be paired with two other friends (B & C) for three way conference intercom.
2. Start an intercom conversation with one of the two friends in your intercom group.
3. You (A) can call the second intercom friend (C) by double tapping the Center Button, or the second intercom friend (C) may join the intercom by making an intercom call to you (A).



8.2.2 Starting Four-way Intercom

With three intercom friends connected, a new participant (D) can make it a four-way intercom conference by making an intercom call to either (B) or (C).



8.2.3 Ending Multi-way Intercom

You can completely terminate the conference intercom or just disconnect an intercom connection with one of your active intercom friends.

1. Press and hold the Center Button for 3 seconds until you hear a beep to terminate all intercom connections.
2. Tap the Center Button to disconnect from your first intercom friend. Double tap the Center Button to disconnect from your second intercom friend.

9 THREE-WAY CONFERENCE PHONE CALL WITH INTERCOM PARTICIPANT

You can have a three-way conference phone call by adding an intercom friend to the mobile phone conversation.

1. During a mobile phone call, tap the Center Button to invite one of your intercom friends to the conversation.
2. To disconnect the intercom during a conference phone call, tap the Center Button.
3. To disconnect the mobile phone call during a conference phone call, press and hold the Center Button for 2 seconds.

10 GROUP INTERCOM

Group Intercom allows you to instantly create a multi-way conference intercom with three other most recently paired headsets.

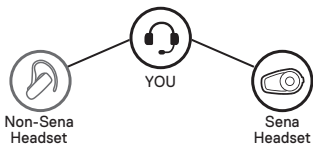
1. Go through intercom pairing with up to three headsets you want to have Group Intercom with.
2. Tap the (+) Button and (-) Button to begin Group Intercom. The LED will flash green.
3. To terminate Group Intercom, press and hold the Center Button for 3 seconds during Group Intercom.

11 UNIVERSAL INTERCOM

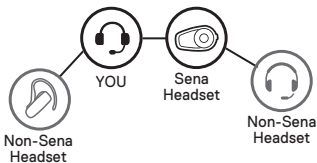
Universal Intercom allows you to have intercom conversations with users of non-Sena Bluetooth headsets. You can pair the headset with only one non-Sena headset at a time. The intercom distance depends on the performance of the Bluetooth headset to which it's connected. When a non-Sena Bluetooth headset is paired with the headset, if another Bluetooth device is paired via Second Mobile Phone Pairing, it will be disconnected.

1. Press and hold the Center Button for 10 seconds to enter the configuration menu. Tap the (+) Button or the (-) Button until you hear a voice prompt, **“Universal intercom pairing”**. Tap the Center Button to enter into Universal Intercom Pairing mode and you will hear multiple beeps.
2. Put the non-Sena Bluetooth headset in Pairing Mode. The headset will automatically pair with a non-Sena Bluetooth headset.

- You can have a two-way intercom or multi-way intercom communication with up to three intercom friends using non-Sena headset.



Three-way Universal Intercom



Four-way Universal Intercom

12 FM RADIO

12.1 FM Radio On/Off

To turn on or off the FM radio, press and hold the (-) Button for 1 second until you hear a mid-toned double beep sound.

12.2 Preset Stations

You can listen to preset stations while listening to the FM radio. Press and hold the Center Button for 1 second to go upward to your next saved preset station.

12.3 Seek and Save

- Double tap the (+) Button or the (-) Button to search up or down the station dial.
- To save the current station, press and hold the Center Button for 3 seconds until you hear a voice prompt, **“Preset (#)”**.
- Tap the (+) Button or the (-) Button, in order to select which preset number you want for that specific station. (You can save up to 10 preset stations.)

4. To save the current station, press and hold the (+) Button for 1 second. You will then hear a voice prompt, **“Save preset (#)”**.
5. To delete the saved station in the preset number, press and hold the (-) Button for 1 second. You will then hear a voice prompt, **“Delete preset (#)”**.

12.4 Scan and Save

1. Press and hold the (+) Button for 1 second.
2. The Sena tuner pauses at each station it finds for 8 seconds before moving to the next.
3. To save a station while scanning frequencies, tap the Center Button at that station. You will hear a voice prompt, **“Save preset (#)”**. The station will be saved as the next preset number.

12.5 Temporary Preset

The Temporary Station Preset feature automatically finds and saves the nearest 10 radio stations without changing your existing preset stations.

1. Tap the (+) Button 3 times to automatically scan for 10 temporary preset stations.
2. The temporary preset stations will be cleared when the headset is powered off.

12.6 FM Sharing

You can listen to the radio during the intercom conversation. To start FM sharing, press and hold the (-) Button for 1 second during the intercom conversation. During FM sharing, you can move to the next preset station and you or your friend on the intercom can change frequencies. If either person changes the frequency, the other will listen to the same frequency. To terminate FM sharing, press and hold the (-) Button for 1 second or end the intercom call.

Note:

1. *FM sharing will be terminated if the headset starts a multi-way intercom conference.*
2. *When Audio Multitasking is enabled, if an intercom call is made while you are listening to the FM radio, FM sharing will not work.*
3. *FM Sharing is only supported between Sena headsets that currently support this feature.*

12.7 Region Selection

You can select the proper FM frequency region from the Device Manager. With the region setting, you may optimize the seek function to avoid unnecessary frequency ranges.

Region	Frequency Range	Step
Worldwide	76.0 ~ 108.0 MHz	± 100 kHz
Americas	87.5 ~ 107.9 MHz	± 200 kHz
Asia	87.5 ~ 108.0 MHz	± 100 kHz
Australia	87.5 ~ 107.9 MHz	± 200 kHz
Europe	87.5 ~ 108.0 MHz	± 100 kHz
Japan	76.0 ~ 95.0 MHz	± 100 kHz

13 FUNCTION PRIORITY

The SC1M operates in the following order of priority:

- (highest)**
- Mobile phone
 - Intercom/FM sharing
 - Music sharing by Bluetooth stereo music
 - Bluetooth stereo music
- (lowest)**
- FM radio

A lower priority function is always interrupted by a higher priority function.

Note:

If you select music as the audio source priority, the order of priority will change as below:

- (highest)**
- Mobile phone
 - Bluetooth stereo music
 - Intercom/FM sharing
 - Music sharing by Bluetooth stereo music
- (lowest)**
- FM radio

14 CONFIGURATION SETTING

14.1 Headset Configuration Setting

1. To enter configuration menu, press and hold the Center Button for 10 seconds until you will also hear a voice prompt, **“Configuration menu”**.
2. Tap the (+) Button or the (-) Button to navigate between the menus. You will hear voice prompts for each menu item.
3. You can execute the command by tapping the Center Button.

Configuration Menu	Tap Center Button
Phone Pairing	None
Second Mobile Phone Pairing	None
GPS Pairing	None
Phone Selective Pairing	None
Media Selective Pairing	None
Delete All Pairings	Execute
Universal Intercom Pairing	Execute
Factory Reset	Execute
Exit Configuration	Execute

14.2 Software Configuration Setting

You can change the settings of the headset through the Device Manager or the Smartphone App.

14.2.1 Speed Dial

Assign phone numbers for speed dialing to make a phone call quickly.

14.2.2 Audio Source Priority (Default: Intercom)

Audio Source Priority allows you to select the priority between the intercom and music (which includes GPS app instructions and message notifications) from a smartphone. If the intercom is selected as the audio source priority, your music will be interrupted during an intercom conversation. If music is selected as the audio source priority, intercom conversations will be interrupted while your music is heard.

Note:

Audio Source Priority is active only when Audio Multitasking is disabled.

14.2.3 Audio Boost (Default: Disable)

Enabling Audio Boost increases the overall maximum volume. Disabling Audio Boost reduces the overall maximum volume, but delivers more balanced sound.

14.2.4 VOX Phone (Default: Enable)

If this feature is enabled, you can answer incoming calls by voice. When you hear a ringtone for an incoming call, you can answer the phone by saying a word such as **“Hello”** loudly or by blowing air into the microphone. VOX phone is temporarily disabled if you are connected to intercom. If this feature is disabled, you have to tap the Center Button to answer an incoming call.

14.2.5 VOX Intercom (Default: Disable)

If this feature is enabled, you can initiate an intercom conversation with the last connected intercom friend by voice. When you want to start intercom, say a word such as **“Hello”** loudly or blow air into the microphone. If you start an intercom conversation by voice, the intercom terminates automatically when you and your intercom friend remain silent for 20 seconds. However, if you manually start an intercom conversation by tapping the Center Button, you have to terminate the intercom conversation manually.

However, if you start intercom by voice and end it manually by tapping the Center Button, you will not be able to start intercom by voice temporarily. In this case, you have to tap the Center Button to restart the intercom. This is to prevent repeated unintentional intercom connections by strong wind noise. After rebooting the headset, you can start intercom by voice again.

14.2.6 HD Voice (Default: Disable)

HD Voice allows you to communicate in high-definition during phone calls. This feature increases the quality so that the audio will be crisp and clear during phone call conversations. If this feature is enabled, incoming phone calls will interrupt intercom conversations and audio from the SR10 will not be heard during intercom conversations. Three-Way Conference Phone Call with Intercom Participant will not be available if HD Voice is enabled.

Note:

1. Refer to the manufacturer of your Bluetooth device that will be connected to the headset to see if it supports HD Voice.
2. HD Voice is active only when Audio Multitasking is disabled.

14.2.7 HD Intercom (Default: Enable)

HD Intercom enhances the two-way intercom audio from normal quality to HD quality. HD Intercom will become temporarily disabled when you enter into a multi-way intercom. If this feature is disabled, the two-way intercom audio will change to normal quality.

Note:

1. The intercom distance of HD Intercom is relatively shorter than that of normal intercom.
2. HD intercom is active only when Audio Multitasking is disabled.

14.2.8 Voice Prompts (Default: Enable)

You can disable voice prompts by software configuration settings, but the following voice prompts are always on.

- Headset configuration settings menu, battery level indicator, speed dial, FM radio functions

14.2.9 RDS AF Setting (Default: Disable)

Radio Data System (RDS) Alternative Frequency (AF) Setting allows a receiver to re-tune to the second frequency location when the first signal becomes too weak. With RDS AF enabled on the receiver, a radio station with more than one frequency can be used.

14.2.10 FM Station Guide (Default: Enable)

When FM Station Guide is enabled, FM station frequencies are given by voice prompts as you select preset stations. When FM Station Guide is disabled, the voice prompts on FM station frequencies will not be given as you select preset stations.

14.2.11 Advanced Noise Control™ (Default: Enable)

When Advanced Noise Control is enabled, the background noise is reduced during an intercom conversation. When it is disabled, the background noise is mixed with your voice during intercom.

14.2.12 Audio Multitasking™ (Default: Disable)

Audio Multitasking allows you to hear the audio from two features simultaneously. When Audio Multitasking is enabled, phone calls, GPS instructions and intercom conversations can be overlaid with audio from the FM radio, music or GPS app instructions from a smartphone in the background with reduced volume. Increasing or decreasing the volume of the audio in the foreground will also increase or decrease the volume of the overlaid audio in the background. The volume of the foreground audio can be adjusted using the headset. How much background audio that is heard can be adjusted using the Smartphone App. HD Intercom and Audio Source Priority become disabled temporarily when Audio Multitasking is enabled.

Model	Foreground*			Background**	
	Phone	GPS	Intercom	FM Radio	Music or Smart Navi
SC1M	<input type="radio"/> ^A	<input type="radio"/> ^A			
		<input type="radio"/>	<input type="radio"/>		
			<input type="radio"/> ^B	<input type="radio"/>	<input type="radio"/> ^B
		<input type="radio"/> ^C		<input type="radio"/> ^C	<input type="radio"/>

Foreground and Background Combination Table

- * Two audio sources in the foreground can be heard simultaneously with the same volume level.
- ** Only one background source can be heard at a time while listening to an audio source in the foreground.
- A. GPS instructions can be heard during phone calls and the volume level of both audio sources can be adjusted using the headset.
- B. GPS app directions will be heard in the background during intercom conversations.
- C. The FM radio will be heard in the background when GPS instructions are heard.

Note:

1. *Audio Multitasking will be activated during two-way intercom conversations with a headset that also supports this feature.*
2. *When Audio Multitasking is disabled, the background audio source will return to its independent volume level.*
3. *For Audio Multitasking to work properly, you need to power the headset off and on. Please restart the headset.*
4. *Some GPS devices may not support this feature.*

14.2.13 Background Volume (Default: Level 5)

The Background Volume can be adjustable only when the Audio Multitasking turns on. Level 9 is the highest volume and 0 is the lowest.

15 FIRMWARE UPGRADE

The SC1M supports firmware upgrades. You can update the firmware using the Device Manager. Please visit oem.sena.com/schubert/ to check the latest software downloads.

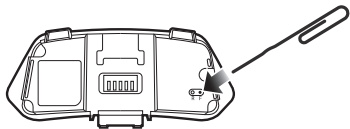
16 TROUBLESHOOTING

16.1 Fault Reset

When the SC1M is not working properly or is in faulty status for any reason, you may reset by gently pushing the pinhole reset button below **R logo** on the back of the main unit. Insert a paper clip into the reset pin-hole and press the reset button for a second with light pressure. The SC1M will be switched off. Restart the system and try again. This will not restore the headset to factory default settings.

16.2 Factory Reset

If you want to restore the headset to factory default settings, use the Factory Reset in the configuration menu or push the pinhole reset button below **F logo** on the back of the main unit. The headset automatically restores the default settings and turns off.



CERTIFICATION AND SAFETY APPROVALS

FCC Compliance Statement

This device complies with part 15 of the FCC rules. Operation is subject to the following two conditions:

- (1) This device may not cause harmful interference, and
- (2) This device must accept any interference received, including interference that may cause undesired operation.

This equipment has been tested and found to comply with the limits for a Class B digital device pursuant to part 15 of the FCC rules. These limits are designed to provide reasonable protection against harmful interference in a residential installation. This equipment generates, uses and can radiate radio frequency energy and, if not installed and used in accordance with the instructions, may cause harmful interference to radio communications. However, there is no guarantee that interference will not occur in a particular installation. If this equipment does cause harmful interference to radio or television reception, which can be determined by turning the equipment on and off, the user is encouraged to try to correct the interference by one or more of the following measures:

- Reorient or relocate the receiving antennae
- Increase the separation between the equipment and the receiver

- Connect the equipment into an outlet on a circuit different from that to which the receiver is connected.
- Consult the dealer or an experienced radio/TV technician for help.

FCC RF Exposure Statement

SC1M

This product is compliance to FCC RF Exposure requirements and refers to FCC website <https://apps.fcc.gov/oetcf/eas/reports/GenericSearch.cfm> search for FCC ID: SPA-SP67

Sena Technologies, Inc. confirm that when equipped, the distance between antenna and one's head is 38 mm.

RC3


This product is compliance to FCC RF Exposure requirements and refers to FCC website <https://apps.fcc.gov/oetcf/eas/reports/GenericSearch.cfm> search for FCC ID: S7A-SP30

FCC Caution

Any changes or modifications to the equipment not expressly approved by the party responsible for compliance could void user's authority to operate the equipment.

CE Declaration of Conformity

SC1M

 This product is CE marked according to the provisions of the Radio Equipment Directive (2014/53/EU). Hereby, Sena declares that the radio equipment type SP67 is in compliance with Directive 2014/53/EU. For further information, please consult oem.sena.com/schuberth/.

This device can be operated in at least one Member State without infringing applicable requirements on the use of radio spectrum.


Product: SC1M

Model: SP67

RF Range for Bluetooth: 2402 ~ 2480 MHz

Max Output Power(E.I.R.P.)for Bluetooth: 17.10 dBm

RC3

 This product is CE marked according to the provisions of the Radio Equipment Directive (2014/53/EU). Hereby, Sena declares that the radio equipment type RC3 is in compliance with Directive 2014/53/EU. For further information, please consult oem.sena.com/schuberth/.

This device can be operated in at least one Member State without infringing applicable requirements on the use of radio spectrum.

Product: RC3

Model: RC3

RF Range for Bluetooth: 2402 ~ 2480 MHz

Max Output Power(E.I.R.P.)for Bluetooth: 4.55 dBm

Industry Canada Statement

This radio transmitter (identify the device by certification number) has been approved by Industry Canada to operate with the antenna types listed below with the maximum permissible gain indicated. Antenna types not included in this list, having a gain greater than the maximum gain indicated for that type, are strictly prohibited for use with this device.

This device complies with Industry Canada license-exempt RSS standard(s). Operation is subject to the following two conditions:

- (1) This device may not cause interference.
- (2) This device must accept any interference, including interference that may cause undesired operation of the device.

Le présent appareil est conforme aux CNR d'Industrie Canada applicables aux appareils radio exempts de licence. L'exploitation est autorisée aux deux conditions suivantes : (1) l'appareil ne doit pas produire de brouillage, et (2) l'utilisateur de l'appareil doit accepter tout brouillage radioélectrique subi, même si le brouillage est susceptible d'en compromettre le fonctionnement.

Le présent appareil est conforme aux CNR d'Industrie Canada applicables aux appareils radio exempts de licence. Son fonctionnement est soumis aux deux conditions suivantes :

- (1) Cet appareil ne doit pas créer d'interférences préjudiciables.
- (2) Cet appareil doit accepter toute interférence reçue, y compris celles causant un fonctionnement indésirable.

Bluetooth License

The Bluetooth® word mark and logos are owned by the Bluetooth SIG, Inc. and any use of such marks by Sena is under license. Other trademarks and trade names are those of their respective owners.

The product is compliant with and adopts the Bluetooth® Specification 4.1 and has successfully passed all interoperability tests that are specified in the Bluetooth® specification. However, interoperability between the device and other Bluetooth®-enabled products is not guaranteed.

WEEE (Waste Electrical and Electronic Equipment)



The crossed-out wheel bin symbol on the product, literature, or packaging reminds you that all electrical and electronic products, batteries, and accumulators must be taken to separate collection at the end of their working life. This requirement applies to the European Union and other locations where separate collection systems are available. To prevent possible harm to the environment or human health from uncontrolled waste disposal, please do not dispose of these products as unsorted municipal waste, but hand it in at an official collection point for recycling.

PRODUCT WARRANTY AND DISCLAIMER

Limited Warranty

Limited Warranty

SCHUBERTH guarantees the product quality based on the technical specification stated in the product manual, and data regarding product warranty. Here, product warranty extends to the product only. SCHUBERTH will not be liable for any loss, damage of human life, or loss of property which may result from using the product beyond defective parts or flaws that occur due to problems in manufacture.

Warranty Period

SCHUBERTH guarantees free-of-charge replacements of defective parts of the product or flaws that may have occurred due to problems in manufacture for a period of 2 years from the date of initial purchase.

Termination

Quality warranty of the product becomes effective on the date of initial purchase. In addition, the quality warranty of the product expires when the warranty period expires. However, in the following cases, the warranty will be terminated prematurely.

- In the event the product has been sold or transferred to a third party.
- In the event the manufacturer's name, serial number, product label, or other markings have been modified or removed.

- In the event any unauthorized person has tried to disassemble, repair, or modify the product.

Notice and Waiver

By buying and using this product, you relinquish considerable legal rights including any claim for compensation for damages. Therefore, be certain to read and understand the following terms and conditions before using the product. Use of this product will constitute consent to this agreement, and forfeiture of rights to all claims. If you do not consent to all the terms and conditions of this agreement, return the product for a refund.

1. You agree that you, your descendants, legal proxies, successors, or transferees will not raise permanent volitional request for any suit, claim, implementation, redemption or similar action from SCHUBERTH and Sena Technologies, Inc ("Sena") with regard to any occasion such as difficulty, pain, suffering, inconvenience, loss, injury, or death which may occur to you or a third party during the use of this product.
2. You must completely understand and accept all risks (including those occurring due to any careless behavior of yours or others) which may occur during the use of this product.

3. You are responsible for ensuring that your medical condition permits usage of the product and that you are in sufficient physical condition for using any device which can be used with it. In addition, you must ensure that the product does not limit your abilities and that you are able to use it safely.
4. You must be an adult who can take responsibilities for using the product.
5. You must read and understand the following warnings and alerts:
 - SCHUBERTH and Sena together with employees, managers, partners, subsidiaries, representatives, agents, supporting firms and suppliers, sole sellers of SCHUBERTH and Sena (collectively referred to as "the company") recommend that, before using the product and similar devices of any brands including its derivative models, you collect any relevant information in advance and be entirely prepared in terms of weather, traffic situation, and road conditions.
 - When you use the product while you operating any vehicle or equipment such as motorcycles, scooters, mopeds, ATVs, or quad-bikes (hereinafter called as "transportation means"), you must take complete caution regardless of the location of such operation.
 - Use of the product on the road may cause such risks as fracture, serious disability, or death.

- ♦ Risk factors, which may occur when you use the product, may be due to errors of the manufacturer, its agents, or third parties which are involved in the manufacturing.
 - ♦ Risk factors, which may occur when you use the product, may be unforeseeable. Therefore, you must take full responsibility for any damage or loss caused by all risk factors which may occur when using the product.
 - ♦ When you use the product, use good judgment; never use it under the influence of alcohol.
6. You must read and completely understand all terms and conditions of legal rights and warnings that are involved in using the product. In addition, usage of the product constitutes acceptance of all terms and conditions regarding waiver of rights.

Warranty Exclusions

Reasons for Limited Liabilities

If you do not return the product after purchasing it, you relinquish all rights to liabilities, loss, claims, and claims for reimbursement of expenses (including attorney's fees). Therefore, SCHUBERTH will not be liable for physical injury, death, or any loss or damage of transportation means, possessions, or assets which belong to you or third parties that may have occurred while you use the product. Further, SCHUBERTH will not be liable for any substantial damage not related to the condition, environment, or malfunction of the product. All risks related with the operation of the product depend entirely on the user regardless of its use by the initial purchaser of a third party.

Use of this product may violate local or national laws. In addition, be aware once again that correct and safe use of the product is entirely your responsibility.

Limitation of Liability

TO THE FULL EXTENT ALLOWED BY LAW, SCHUBERTH EXCLUDES FOR ITSELF AND ITS SUPPLIERS ANY LIABILITY, WHETHER BASED IN CONTRACT OR TORT (INCLUDING NEGLIGENCE), FOR INCIDENTAL, CONSEQUENTIAL, INDIRECT, SPECIAL, OR PUNITIVE DAMAGES OF ANY KIND, OR FOR LOSS OF REVENUE OR PROFITS, LOSS OF BUSINESS, LOSS OF INFORMATION OR DATA, OR OTHER FINANCIAL LOSS ARISING OUT OF OR IN CONNECTION WITH THE SALE, INSTALLATION, MAINTENANCE, USE, PERFORMANCE, FAILURE, OR INTERRUPTION OF ITS PRODUCTS, EVEN IF SCHUBERTH OR ITS AUTHORIZED RESELLER HAS BEEN ADVISED OF THE POSSIBILITY OF SUCH DAMAGES, AND LIMITS ITS LIABILITY TO REPAIR, REPLACEMENT, OR REFUND OF THE PURCHASE PRICE PAID, AT SCHUBERTH'S OPTION. THIS DISCLAIMER OF LIABILITY FOR DAMAGES WILL NOT BE AFFECTED IF ANY REMEDY PROVIDED HEREIN SHALL FAIL OF ITS ESSENTIAL PURPOSE. IN ANY CASE, THE TOTAL COMPENSATION LIABILITIES OF SCHUBERTH OR ITS SALES AGENTS SHALL NOT EXCEED THE PRICE PAID FOR THE PRODUCT BY THE PURCHASER.

Liabilities Disclaimer

In addition to damages which may occur due to the use of the product, SCHUBERTH will not be liable for damages of the product which occur due to the following events.

- In the event the product is misused or used for purposes other than its intended purposes.
- In the event the product is damaged because the user does not follow the content of the product manual.
- In the event the product is damaged because it has been left unattended or has undergone any other accident.
- In the event the product is damaged because the user has used any parts or software which are not provided by the manufacturer.
- In the event the product is damaged because the user has disassembled, repaired, or modified it in such way as is not explained in the product manual.
- In the event the product is damaged by a third party.
- In the event the product is damaged due to Acts of God (including fire, flood, earthquake, storm, hurricane or other natural disaster).
- In the event the surface of the product is damaged by use.

Warranty Service

To obtain product warranty service, send the defective product, at your expense, to the manufacturer or the seller along with proof of purchase (a receipt that shows the purchase date, a product registration certificate of the Website, and other relevant information). Take necessary measures to protect the product. In order to get a refund or replacement, you must include the whole package as it was purchased.

Free-of-charge Service

SCHUBERTH will provide free-of-charge repair or replacement service for the product when product defects occur within the scope of the product warranty during the warranty period.



Producer: Sena Technologies, Inc
19, Heolleung-ro 569-gil, Gangnam-gu
Seoul 06376, Republic of Korea

Importer in Europe: Schubert GmbH
Stegelitzer Straße 12
D-39126 Magdeburg, Germany

Importer in US: Schubert North America
33 Journey, Suite 200
Aliso Viejo, CA 92656, USA